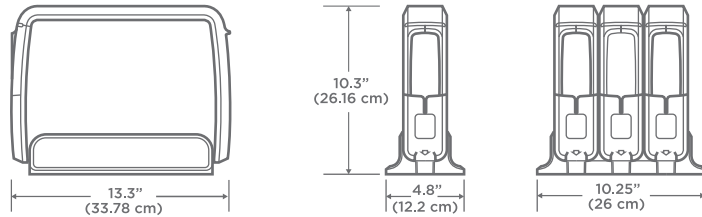




5 QUICK TIPS to Know and Share

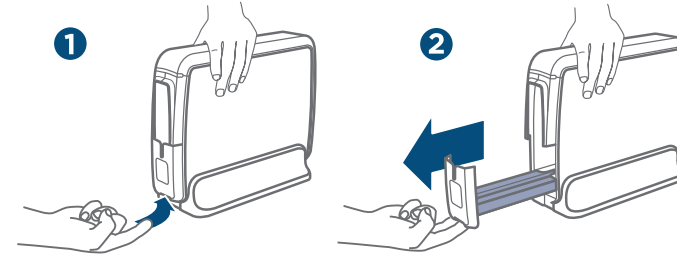
General Specs | Especificaciones generales | Spécifications générales



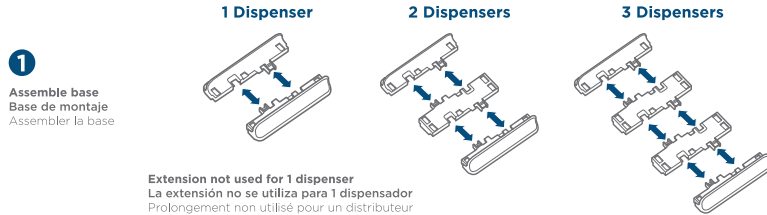
QUICK TIP 1

Easily add more dispensers as needed.

Loading | Carga | Mise en place

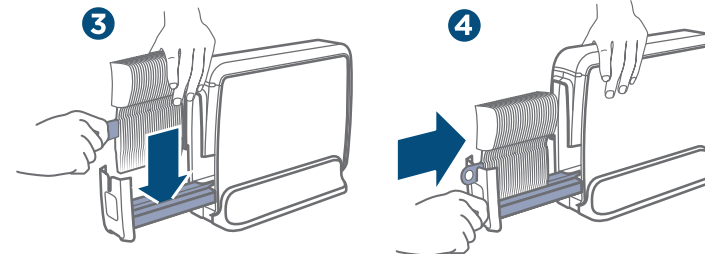


Setup | Instalación | Installation



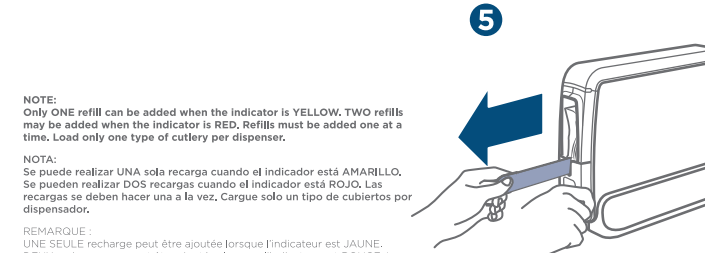
QUICK TIP 2

Front in first, push down until it clicks.



QUICK TIP 3

Push in drawer assembly until it clicks.



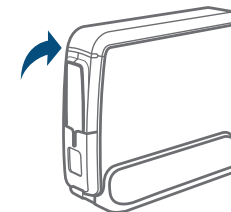
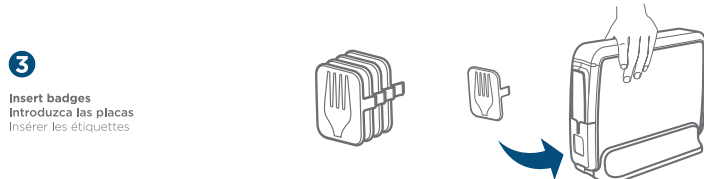
QUICK TIP 4

Secure dispenser w/opposite hand, then remove blue skewer.

NOTE:
Only ONE refill can be added when the indicator is YELLOW. TWO refills may be added when the indicator is RED. Refills must be added one at a time. Load only one type of cutlery per dispenser.

NOTA:
Se puede realizar UNA sola recarga cuando el indicador está AMARILLO. Se pueden realizar DOS recargas cuando el indicador está ROJO. Las recargas se deben hacer una a la vez. Cargue solo un tipo de cubiertos por dispensador.

REMARQUE:
UNE SEULE recharge peut être ajoutée lorsque l'indicateur est JAUNE. DEUX recharges peuvent être ajoutées lorsque l'indicateur est ROUGE. Les recharges doivent être ajoutées une à la fois. Chargez un seul type d'ustensile par distributeur.



QUICK TIP 5

Optimize space: order a wall bracket (SSWWALLMNT).



ServeGreatness.com

1-866-HELLOGP (435-5647)

© 2018 GP PRO. All rights reserved. All trademarks are owned by or licensed to Georgia-Pacific Consumer Products 1853292_01 R1



Georgia-Pacific